

CONCEPT DRAFT

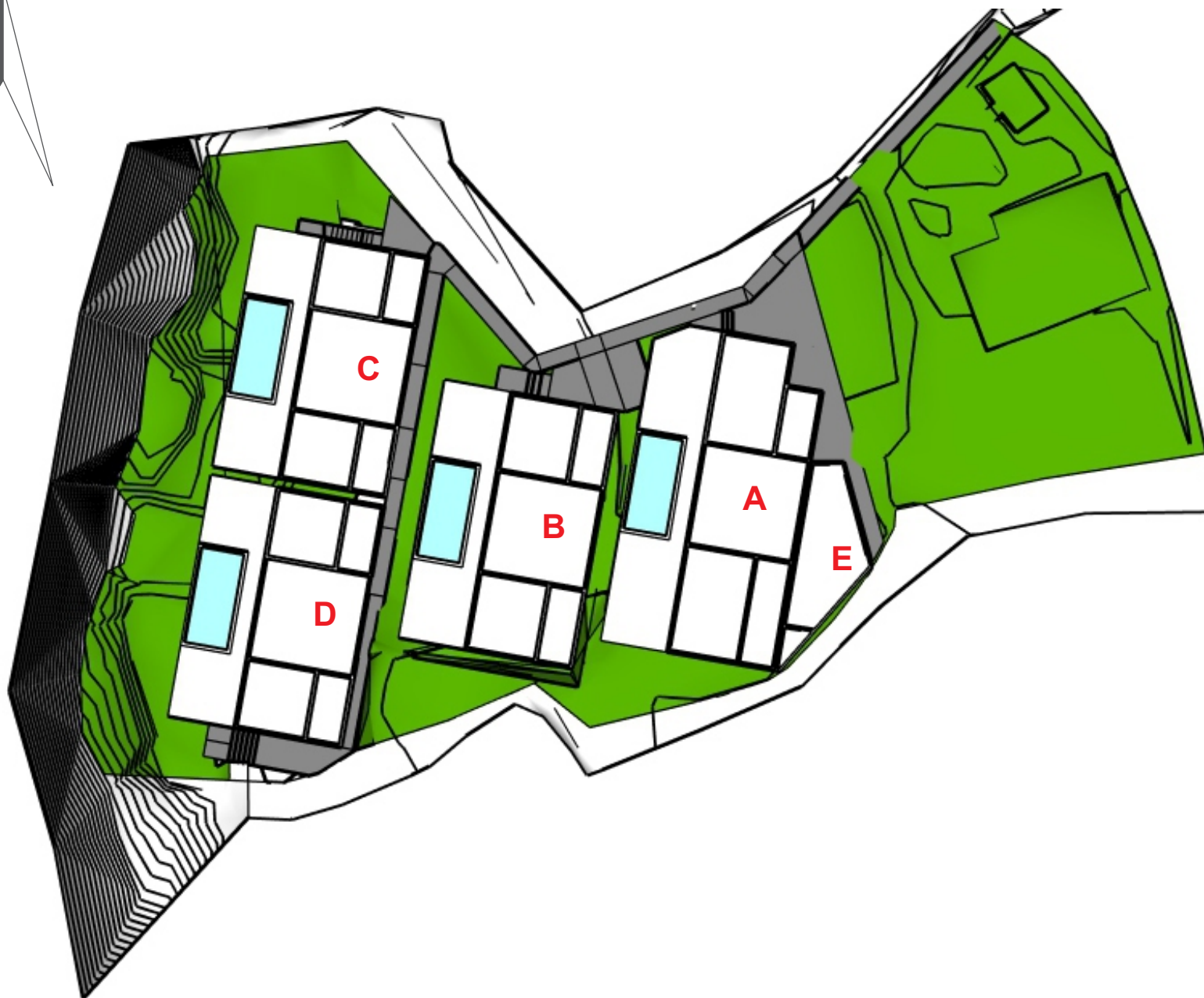
J U N G L E B L I S S V I L L A S

An aerial photograph of a village in Ubud, Bali. The image shows a dense cluster of traditional houses with dark, tiled roofs, interspersed with lush green trees and vegetation. A prominent road runs vertically through the center of the village. The overall scene is a mix of built-up areas and natural greenery.

Location

Andong Street, Ubud, Bali
80571

U



JUNGLE BLISS VILLAS

VILLA - A

Total Area - 194 m²

Parking Area - 17.4 m²

VILLA - B

Total Area - 163 m²

Parking Area - 18.5 m²

VILLA - C

Total Area - 152.5 m²

Parking Area - 9.5 m²

VILLA - D

Total Area - 152.5 m²

Parking Area - 10 m²

STAFF AND STORAGE

Total Area - 35 m²

Parking Area - 4.3 m²

OTHER

Partway - 85 m²

Parking Area - 59.7 m²

Landscape - 370.3 m²



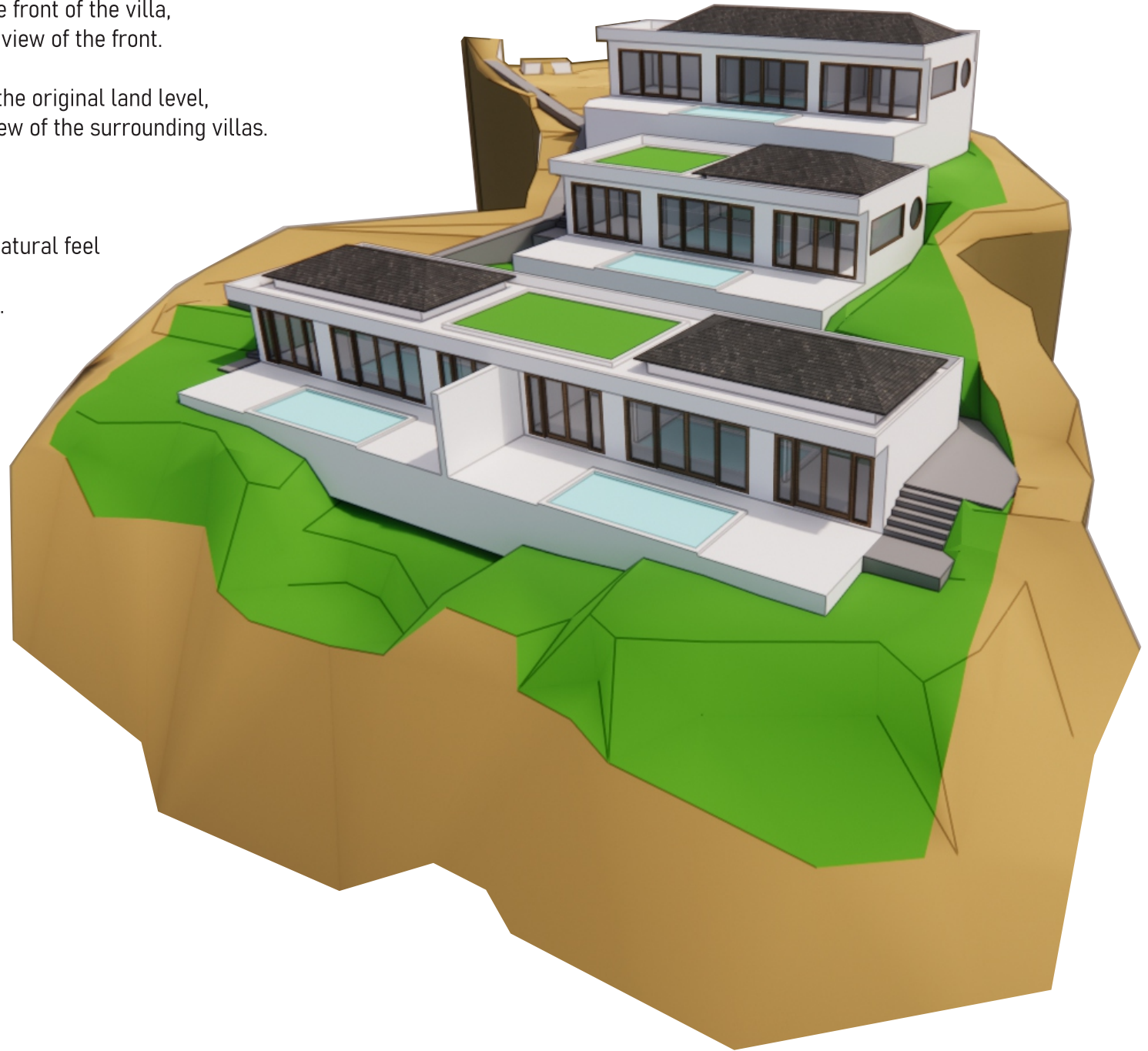
CONCEPT DRAFT JUNGLE BLISS VILLAS

This concept designed with an open area at the front of the villa, with expansive doors and windows for a clear view of the front.

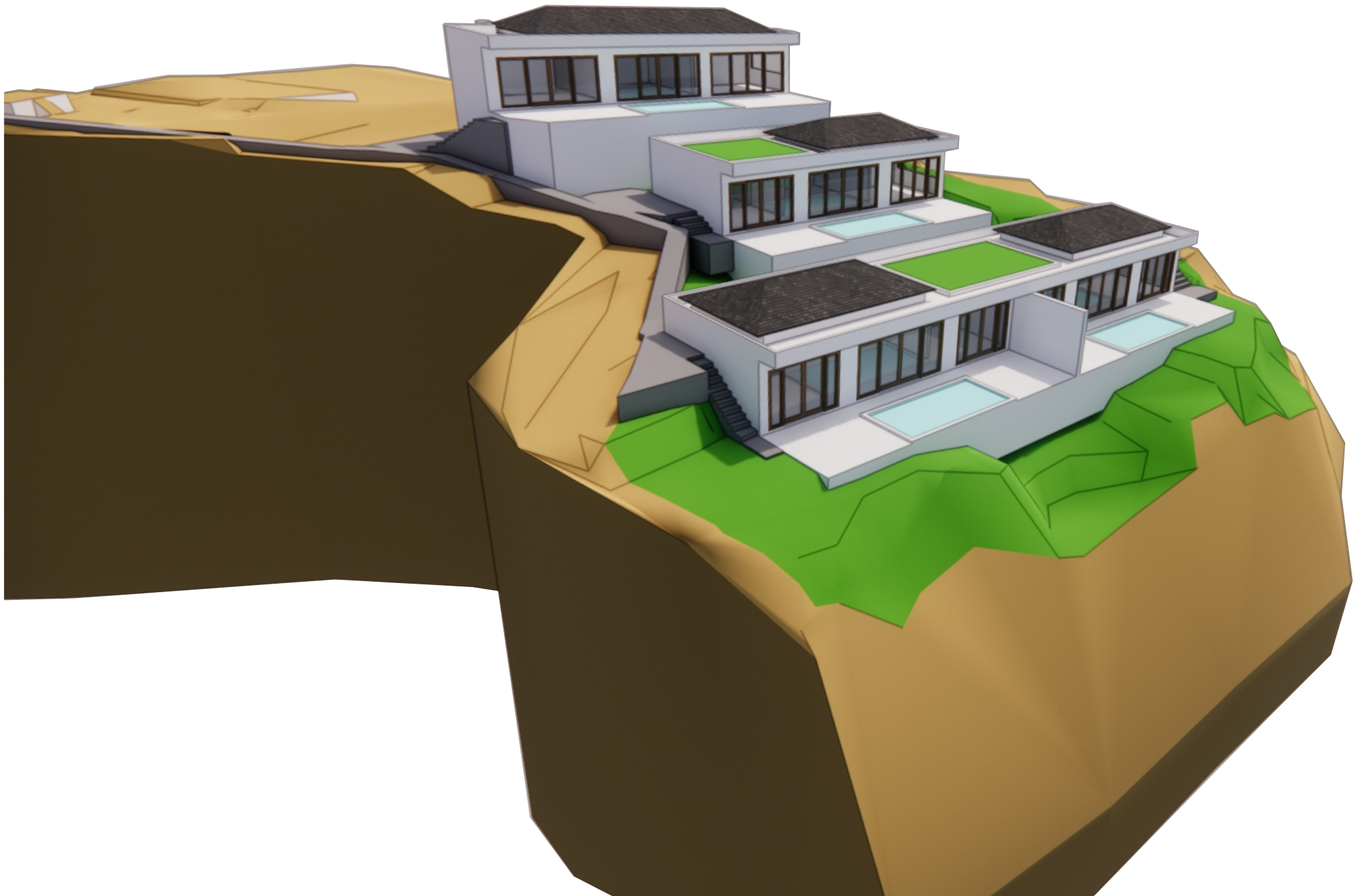
The villa's design also follows the contours of the original land level, allowing each villa to have an unobstructed view of the surrounding villas.

The roof is positioned on the side of the villa to avoid obstructing the front view.

A rooftop garden is also provided to create a natural feel and camouflage the concrete, preventing it from appearing harsh and boring.



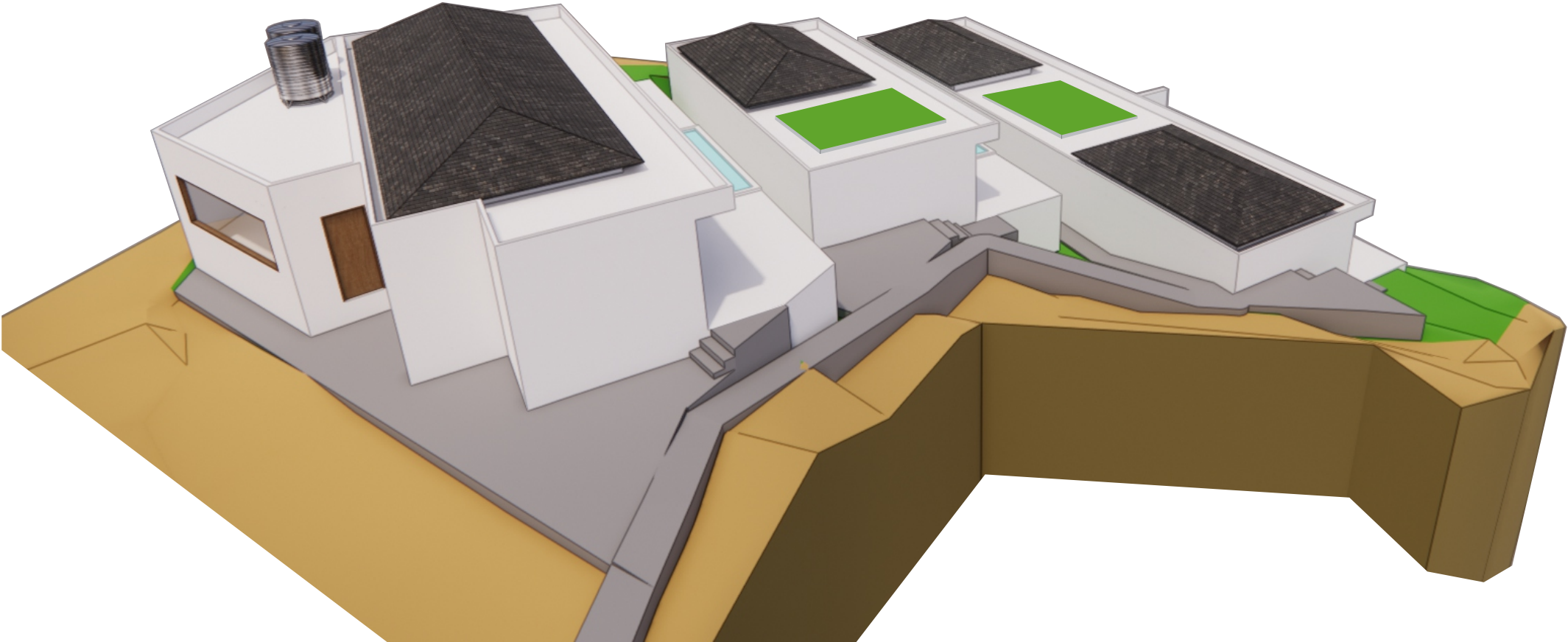
AERIAL VIEW

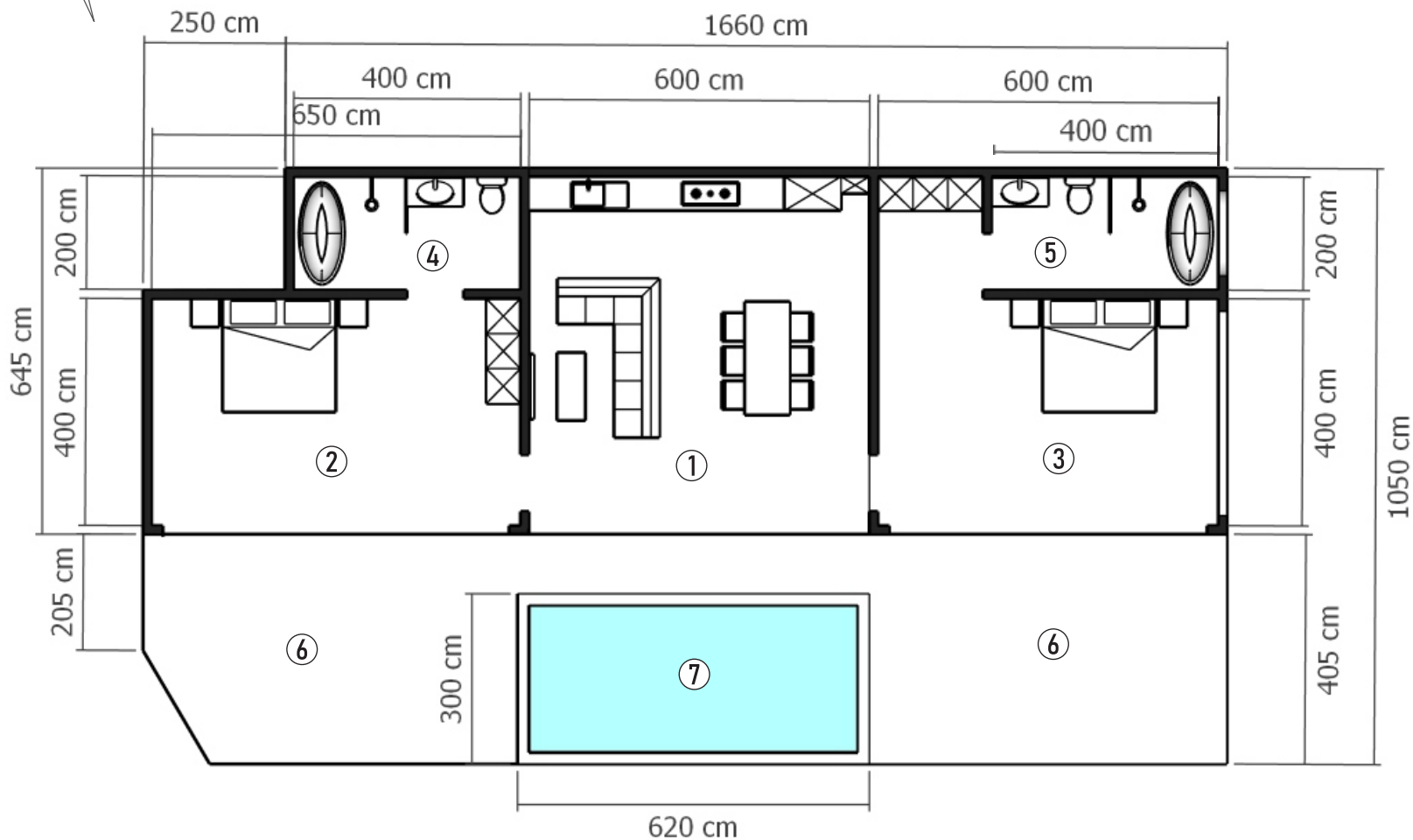


FRONT VIEW

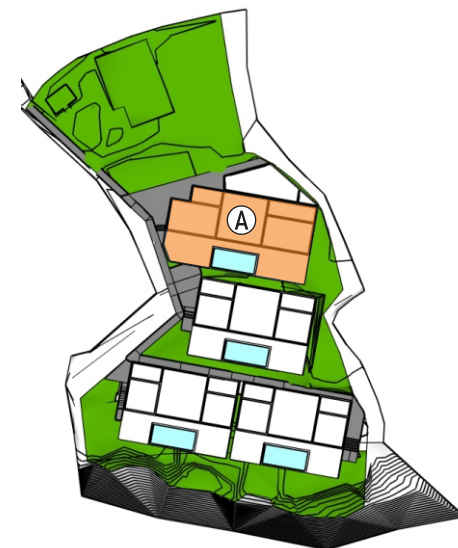


BACK VIEW





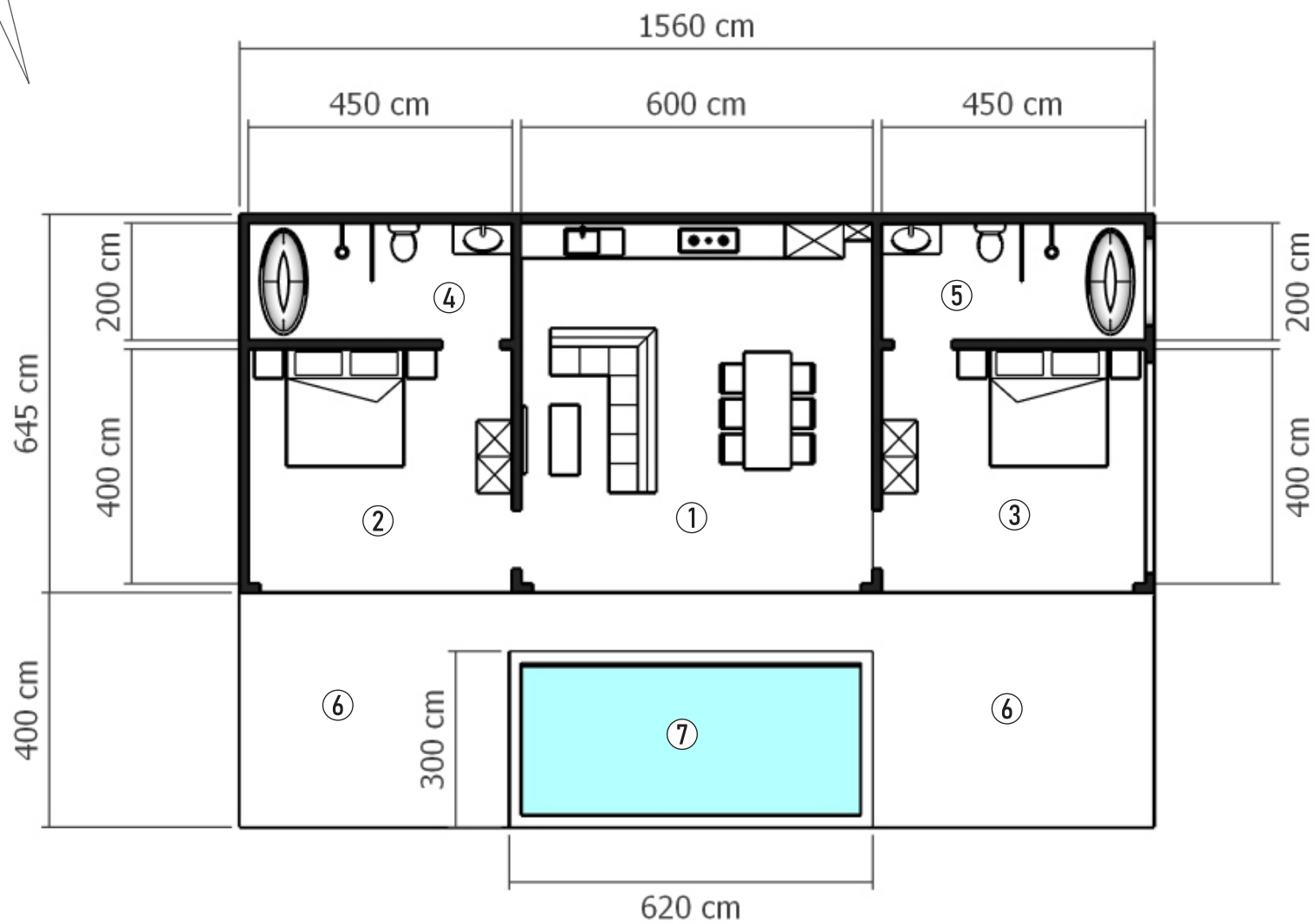
KEYPLAN



VILLA - A

Total Area - 194 m²

1. Living and Kitchen - 36.9 m²
2. Bedroom 1 - 26 m²
3. Bedroom 2 - 24 m²
4. Bathroom 1 - 8 m²
5. Bathroom 2 - 12 m²
6. Terrace - 57.5 m²
7. SwimmingPool - 18.6 m²



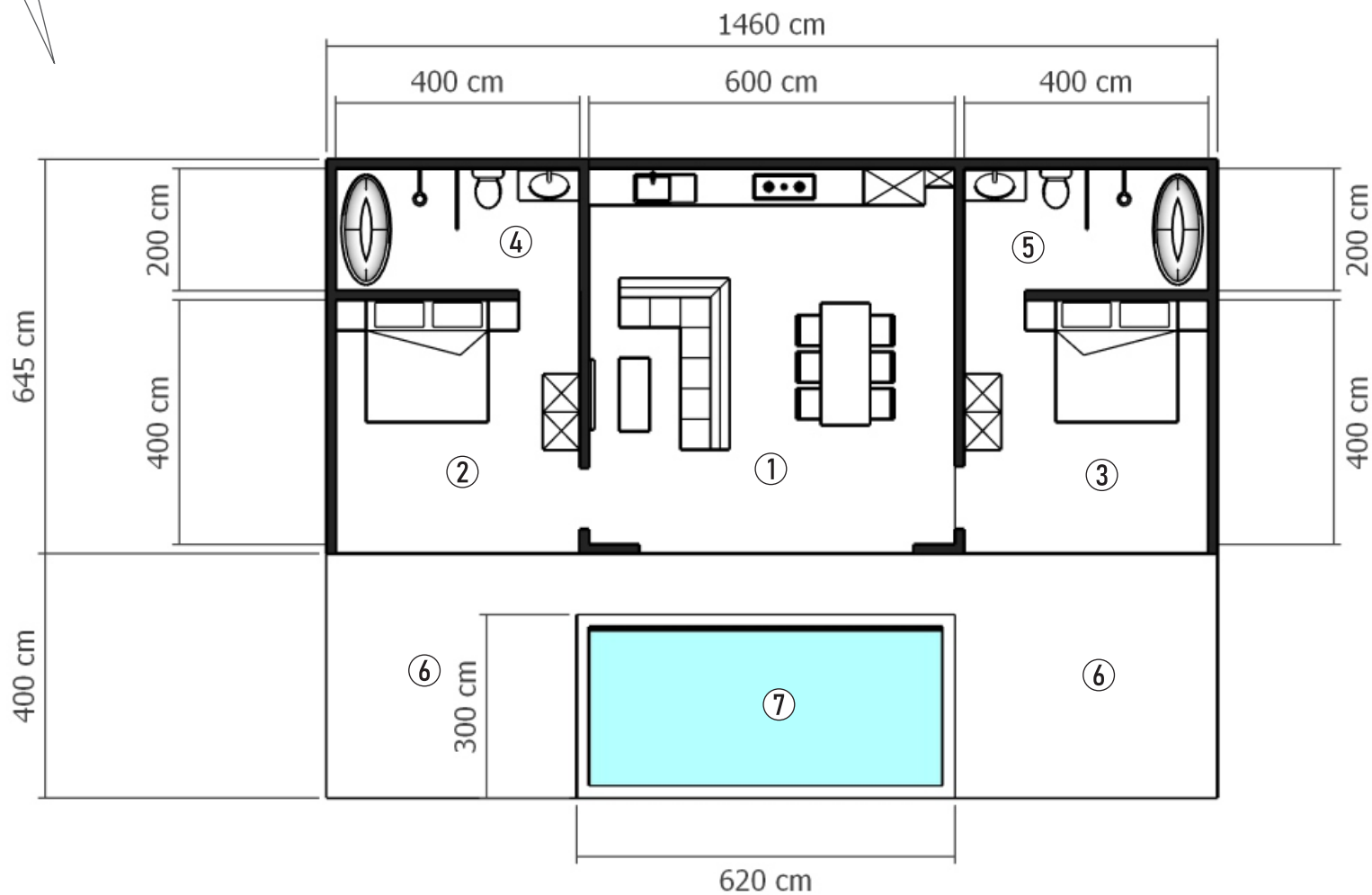
KEYPLAN



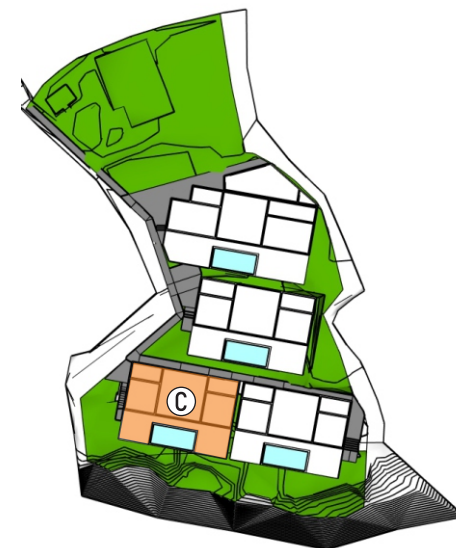
VILLA - B

Total Area - 163 m²

1. Living and Kitchen - 36 m²
2. Bedroom 1 - 18 m²
3. Bedroom 2 - 18 m²
4. Bathroom 1 - 9 m²
5. Bathroom 2 - 9 m²
6. Terrace - 43.8 m²
7. Swimming Pool - 18.6 m²



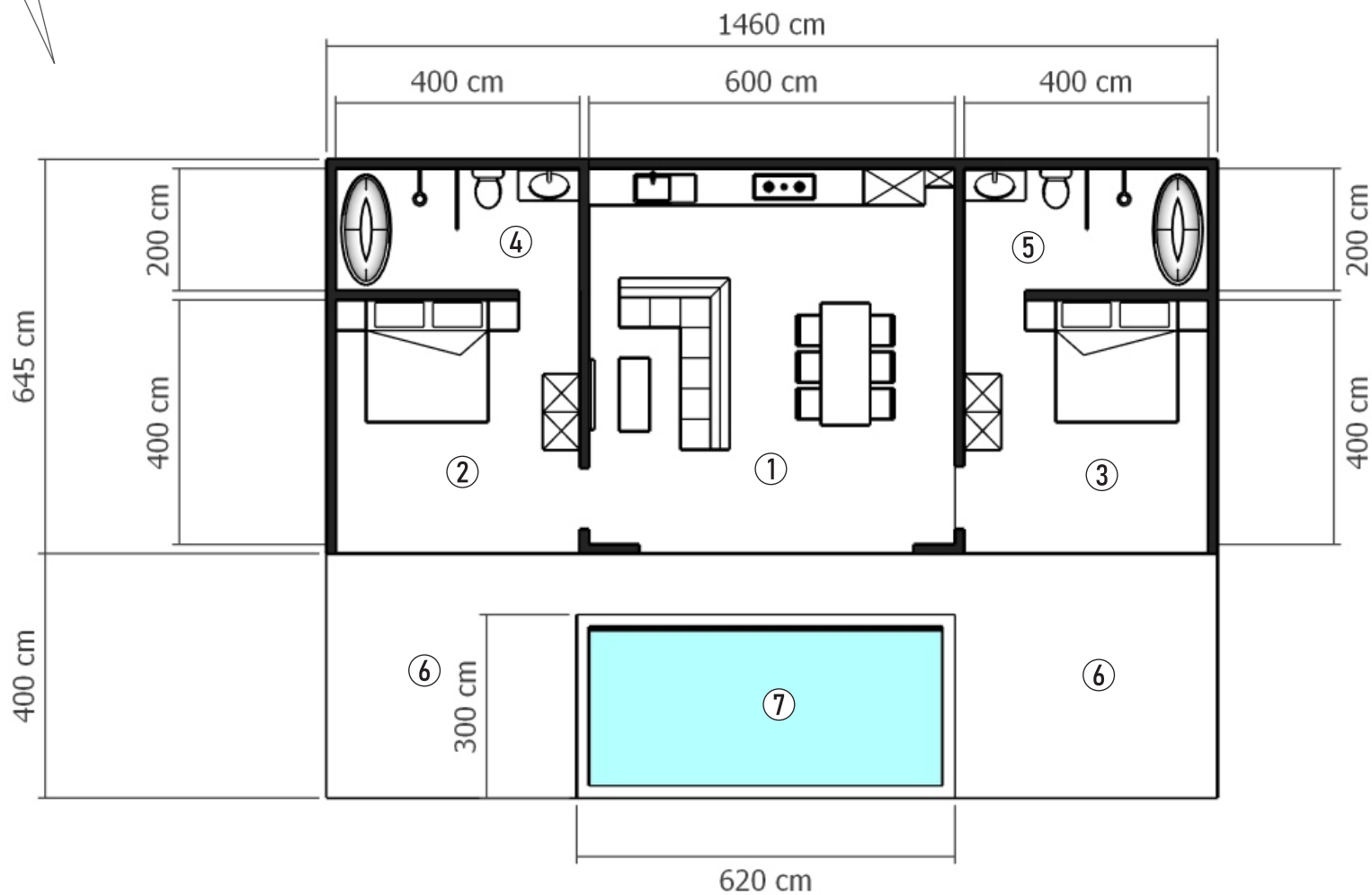
KEYPLAN



VILLA - C

Total Area - 152.5 m²

- 1. Living and Kitchen - 36 m²
- 2. Bedroom 1 - 16 m²
- 3. Bedroom 2 - 16 m²
- 4. Bathroom 1 - 8 m²
- 5. Bathroom 2 - 8 m²
- 6. Terrace - 39.8 m²
- 7. SwimmingPool - 18.6 m²



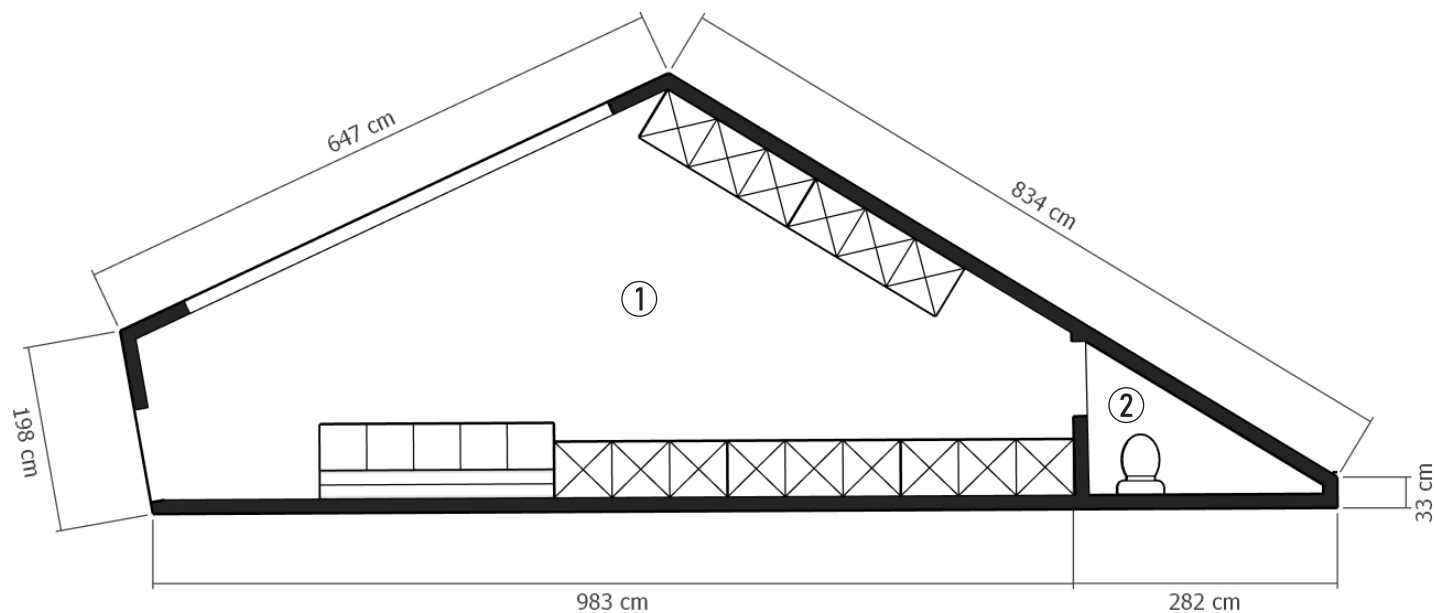
KEYPLAN



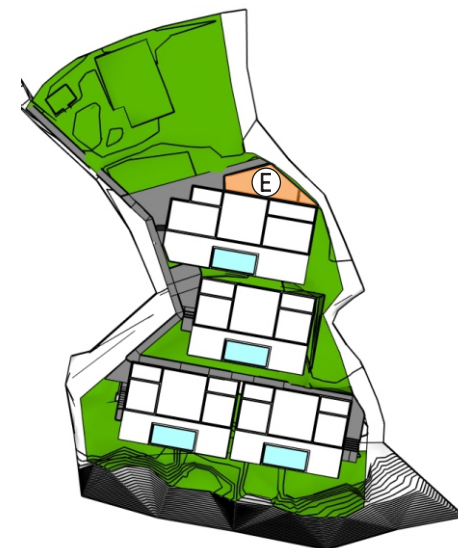
VILLA - D

Total Area - 152.5 m²

- 1. Living and Kitchen - 36 m²
- 2. Bedroom 1 - 16 m²
- 3. Bedroom 2 - 16 m²
- 4. Bathroom 1 - 8 m²
- 5. Bathroom 2 - 8 m²
- 6. Terrace - 39.8 m²
- 7. Swimming Pool - 18.6 m²



KEYPLAN



STORAGE AND STAFF ROOM

Total Area - 35 m²

1. Staff and Storage - 30 m²

2. Toilet - 2.2 m²